


# TH-3

## CORNER



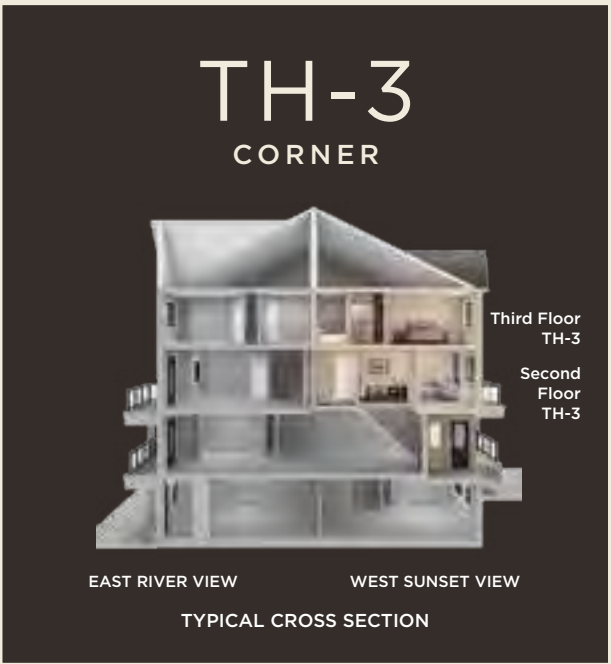
Third Floor  
TH-3

Second Floor  
TH-3

EAST RIVER VIEW


WEST SUNSET VIEW

TYPICAL CROSS SECTION



# TH-3

## CORNER



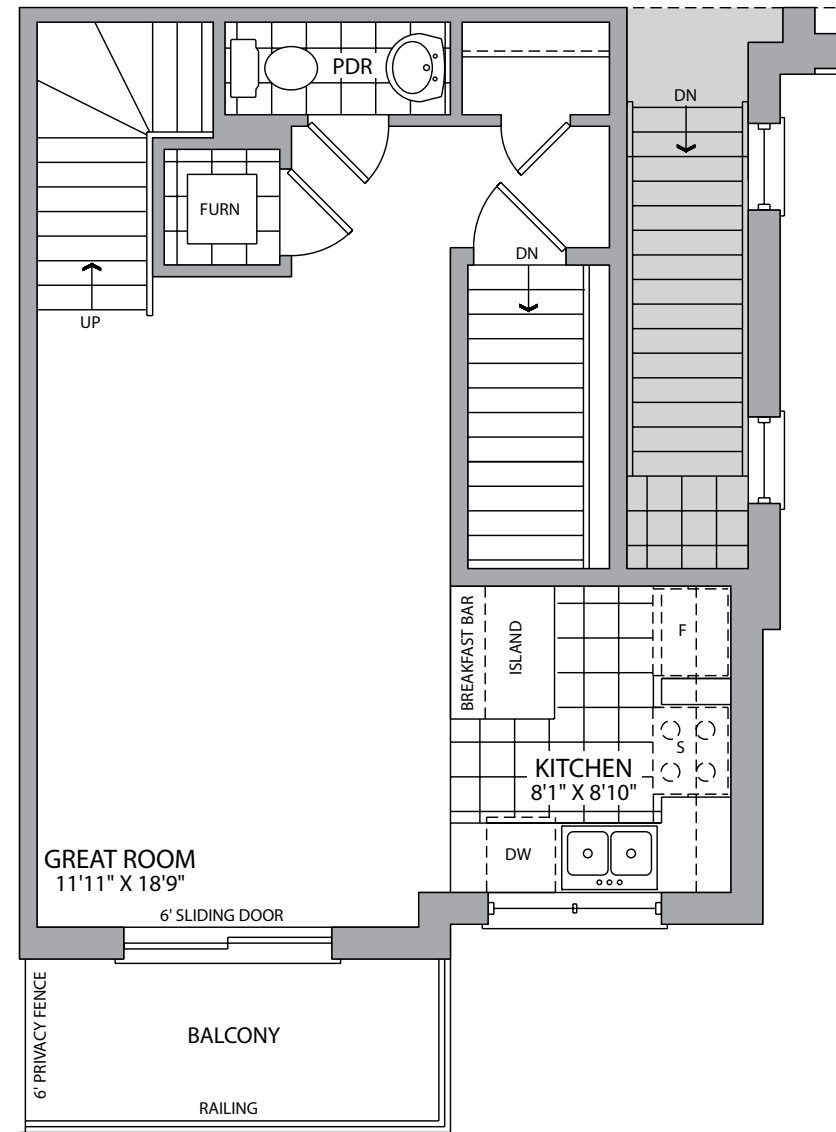
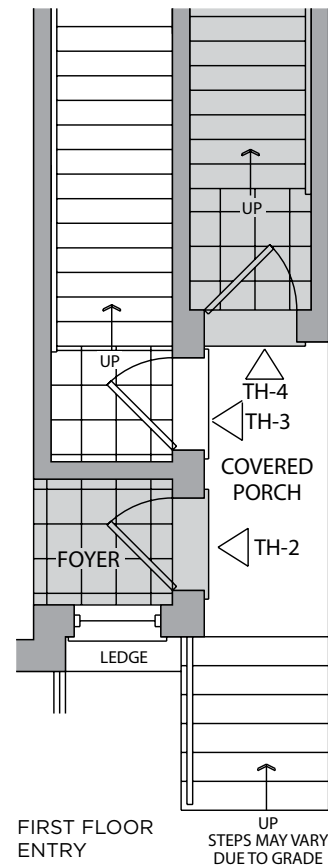
Third Floor  
TH-3

Second Floor  
TH-3

EAST RIVER VIEW

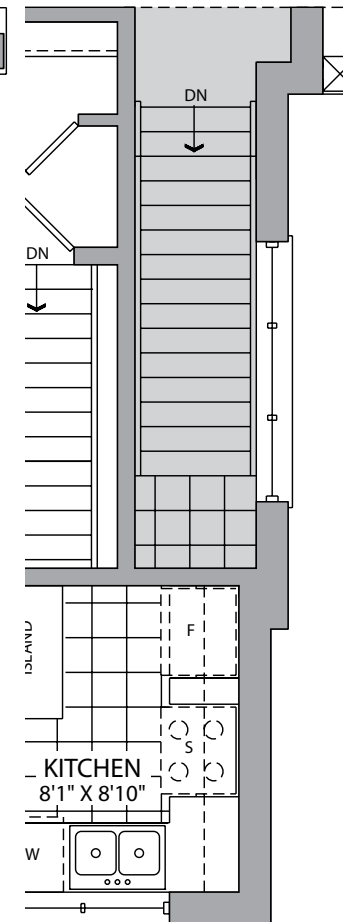
WEST SUNSET VIEW

TYPICAL CROSS SECTION

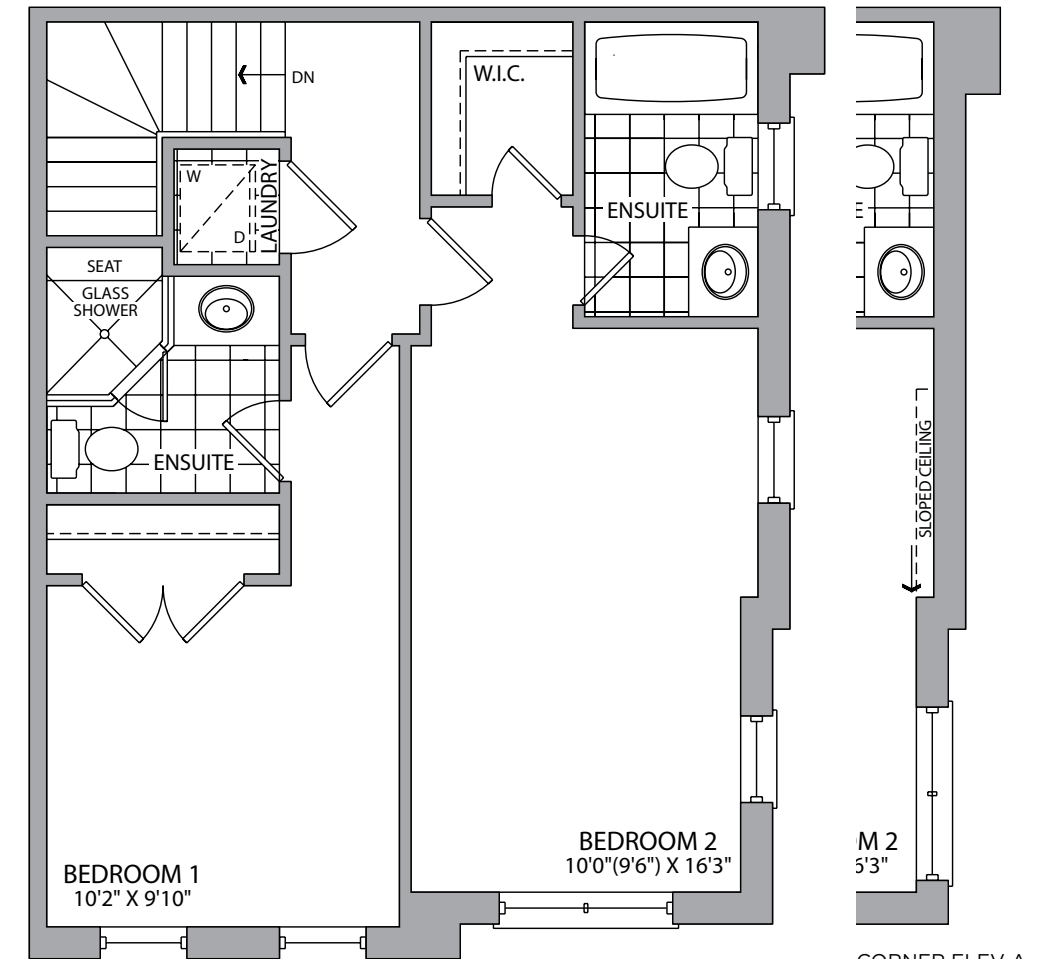


The floor plan for the second floor includes the following areas and features:

- Great Room:** 11'11" X 18'9", featuring a 6' sliding door leading to a balcony.
- Kitchen:** 8'1" X 8'10", equipped with a double sink (DW), a refrigerator (F), a stove (S), and a breakfast bar.
- PDR (Private Dining Room):** Located at the top of the plan, containing a toilet and a sink.
- Furn:** A furniture area located near the PDR and the Great Room.
- Staircases:** Multiple sets of stairs are shown, including an "UP" staircase on the left and several "DN" (down) staircases throughout the plan.
- Balcony:** Accessible via a 6' sliding door from the Great Room, featuring a 6' privacy fence and a railing.



Architectural floor plan of the second floor. The plan includes a kitchen area labeled "KITCHEN 8'1" X 8'10" W" with a sink and stove. An "ISLAND" is located adjacent to the kitchen. A set of stairs is shown with a downward arrow and the label "DN". A fireplace is indicated by a dashed line and labeled "F". A storage area is labeled "S". The plan also shows a doorway leading to another room and a window with a cross-hatch pattern.



The floor plan for the second floor includes the following details:

- Bedroom 1:** Located at the bottom left, measuring 10'2" x 9'10". It features a bay window with a decorative valance.
- Bedroom 2:** Located at the bottom right, measuring 10'0" (9'6") x 16'3". It has a large window with a decorative valance.
- Laundry:** Situated between the two bedrooms, containing a washer (W) and a dryer (D) area.
- Ensuite 1:** Attached to Bedroom 1, featuring a glass shower, a toilet, and a vanity.
- Ensuite 2:** Attached to Bedroom 2, featuring a toilet, a vanity, and a bathtub.
- W.I.C.:** A walk-in closet located between the two ensuite bathrooms.
- Stairs:** Located at the top left, with a downward arrow labeled "DN".
- Additional Features:** A "SEAT" is located near the stairs. A "SLOPED CEILING" is indicated on the right side of the plan.

The floor plan for the second floor includes the following details:

- Bedroom 1:** Located at the bottom left, measuring 10'2" x 9'10". It features a bay window with a decorative valance.
- Bedroom 2:** Located at the bottom right, measuring 10'0" (9'6") x 16'3". It has a large window with a decorative valance.
- Laundry:** Situated between the two bedrooms, containing a washer (W) and a dryer (D) area.
- Ensuite 1:** Attached to Bedroom 1, featuring a glass shower, a toilet, and a vanity.
- Ensuite 2:** Attached to Bedroom 2, featuring a toilet, a vanity, and a bathtub.
- W.I.C.:** A walk-in closet located between the two ensuite bathrooms.
- Stairs:** Located at the top left, with a downward arrow labeled "DN".
- Additional Features:** A "SEAT" is located near the stairs. A "SLOPED CEILING" is indicated on the right side of the plan.

